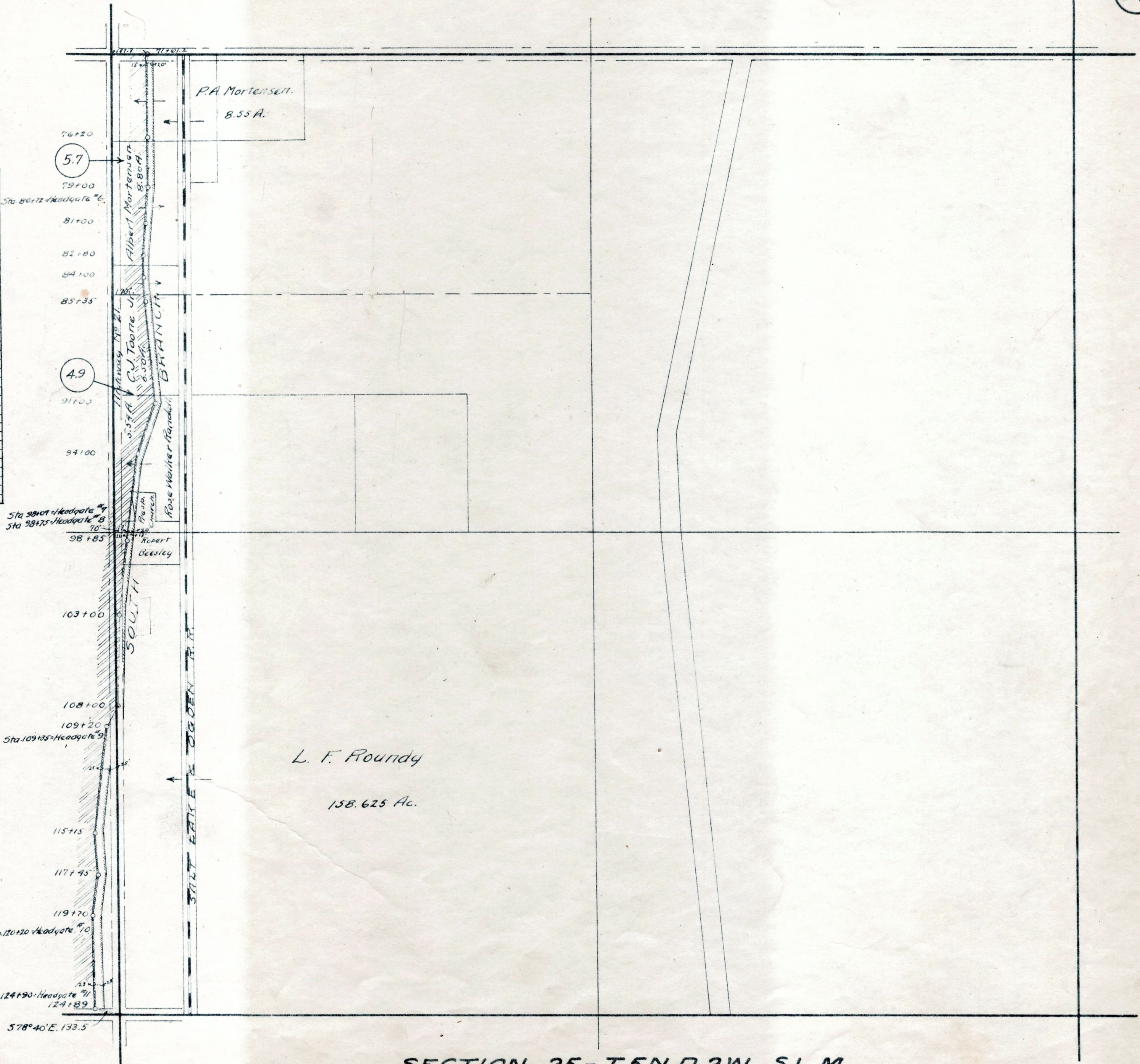


SOUTH BRANCH.

Station	Bearing
70+40	50°-05' W.
76+20	51°-00' E.
79+00	54°-28' W.
81+00	52°-45' W.
82+80	50°-10' W.
84+00	54°-23' E.
85+35	53°-40' E.
91+00	517°-56' W.
94+00	56°-50' W.
98+86	55°-49' W.
103+00	50°-45' W.
108+00	530°-17' W.
109+20	56°-00' W.
115+15	54°-12' E.
117+45	56°-42' W.
119+70	51°-20' E.
124+89	52°-33' E.
127+35	



SECTION 25 - T.5N. R.2W. S.L.M.